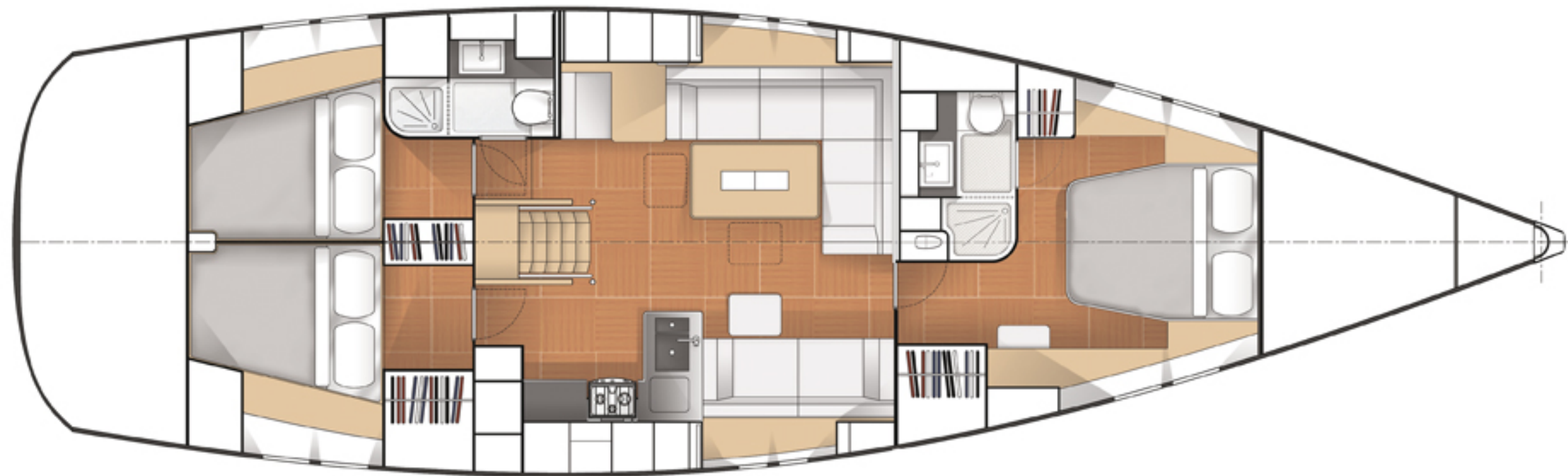


D1

C1

B1

A1





Angie

2013. 8. 6 17:35



2013. 8. 6 17:36



2013. 8. 6 17:36



2013. 8. 6 17:36



2013. 8. 6 17:37

2013. 8. 12 15:24



2013. 8. 12 15:24



2013. 8. 12 15:24



2013. 8. 12 15:25



2013. 8.12 15:25



2013. 8. 12 15:26



2013. 8. 12 15:26


captain eddy
MARINA OF SEASIDE CITY, NORTH CAROLINA
TEL: 919 282 8744 FAX: 919 282 8744
WWW.CAPTAINEDDYMARINA.COM



2013. 8. 12 15:28



2013. 8. 12 15:28



2013. 8. 12 15:28



2013. 8. 12 15:29



2013. 8. 12 15:30



2013. 8. 12 15:30




2013. 8. 12 15:30



2013. 8. 12 15:30

TRAD

A large, rectangular white canvas bag is the central focus of the image. It is positioned on a wooden boat deck. In the background, a white cylindrical object, possibly a lifebuoy, is visible with a coil of green rope and a red rope wrapped around it. The scene is brightly lit, with strong shadows cast across the bag and the deck. The bag has a simple design with a vertical seam down the middle and a horizontal seam near the top. The deck is made of light-colored wooden planks.

2013. 8. 12 15:31



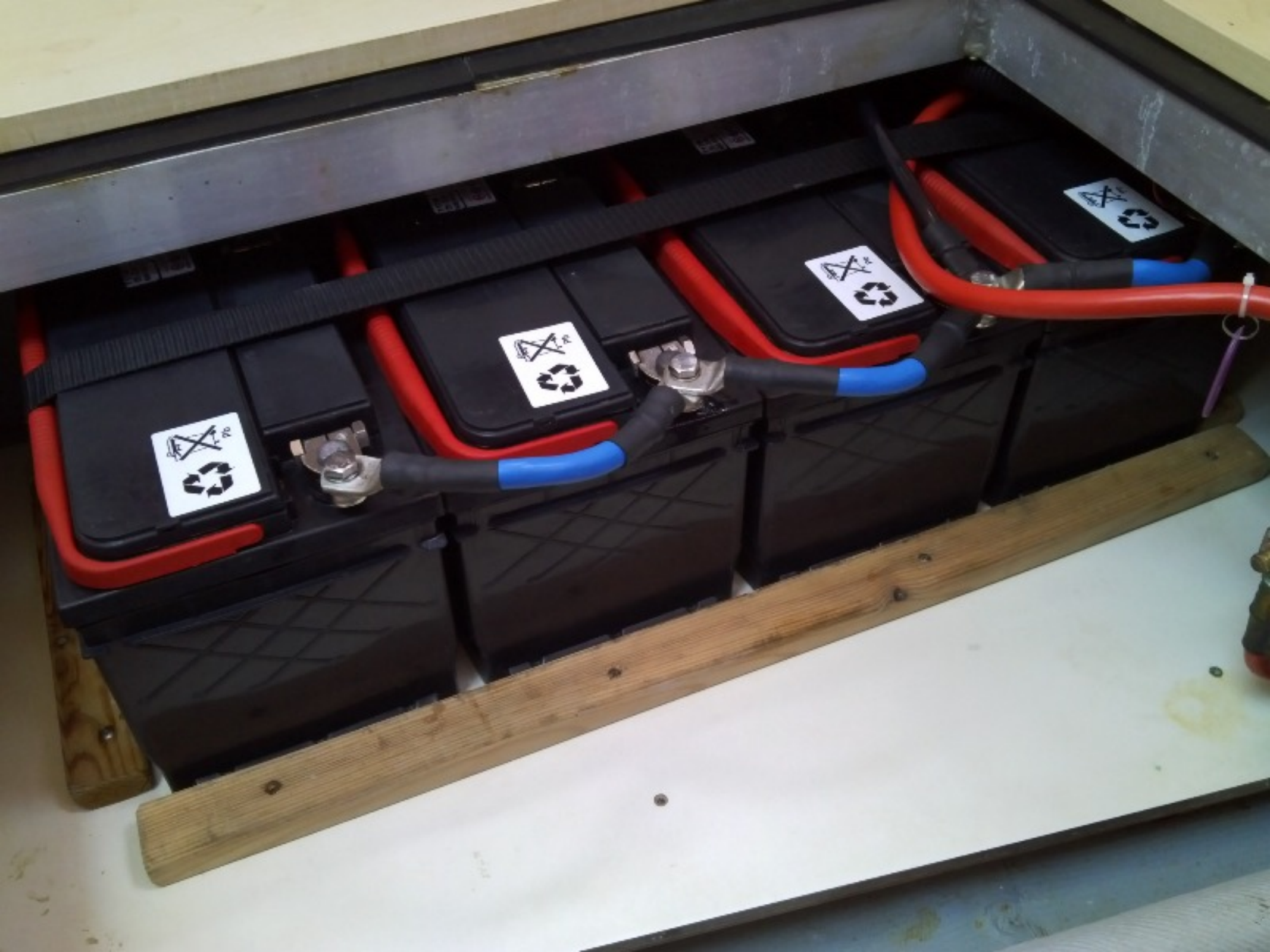


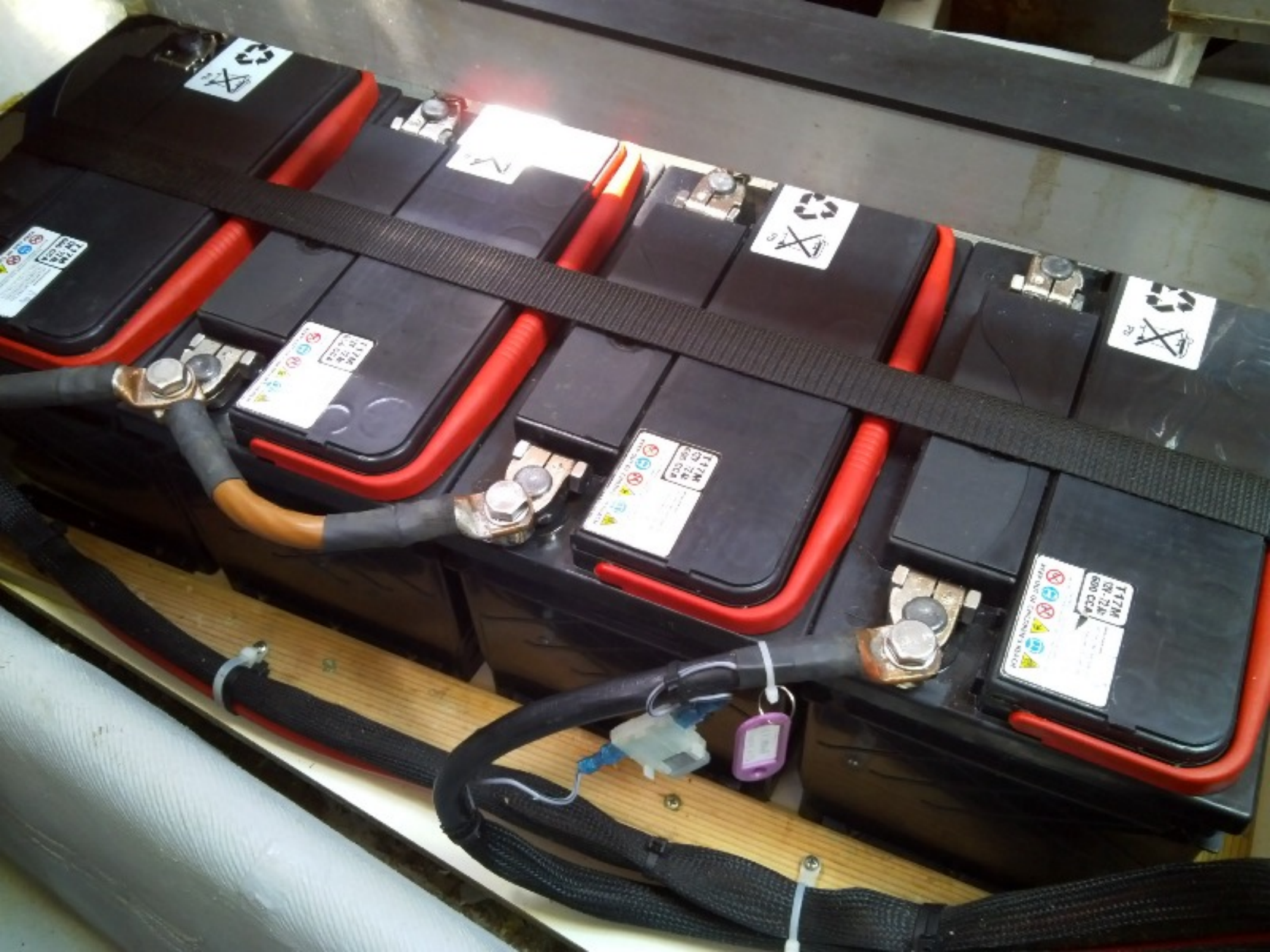


























Control panel with various switches and gauges:

- Five vertical switches on the left: Air Condition I, Air Condition II, Air Condition III, Air Condition Sea Water Pump, Battery Charger 12V.
- Five vertical switches on the right: Backyard AC Tubette, Spinnaker AC Mastie / Maston, Backyard AC Mast / Maston, Radio, Microwave.
- Bottom left: AC Voltage gauge.
- Bottom center: Four indicator lights (Blower Fan On, Generator, Cruise Power, Air Condition).
- Bottom right: AC Selector knob.
- Bottom center: *Hanse* logo and a fuse block labeled Air Condition and Generator.

Bow Thruster

12V Winch



12V Service



12V Engine









SIMRAD

SAMSUNG

Wireless Audio
with Sync







SIMRAD

SAMSUNG

Wireless Audio
with DTS







COUVERTURE
ANTI-FEU
FIRE BLANKET











MAX
POWER

To Turn
ON / OFF
Press Button
& push
In/Out Light
Test Record

THRUSTER

YANMAR

min⁻¹
x100

STOP

GLOW OFF ON
START

The tachometer scale ranges from 0 to 50, with major markings at 10, 20, 30, 40, and 50. The needle is currently pointing to approximately 10. The panel includes four warning icons: a water level icon, an oil can icon, a battery icon, and a flame icon. The start/stop knob has a red ring and is labeled 'STOP' at the top and 'START' at the bottom. The 'GLOW OFF ON' label is positioned to the left of the knob.

WARNUNG !
STRECKNÄHME
LEISTUNG LESSEN !







Angie

Barnaul



Angie

Hans















Angie





