



COMMERCIAL SPECIFICATION FOR A

MOTOR YACHT


METALSHIPS 59



297.100.004__Rev_I_Commercial Specification APRIL _ 2017

COMMERCIAL SPECIFICATION METALSHIPS 59

SPECIFICATION

Builder	Metalships & Docks (Spain)
Year Delivered	2016
Build No	C-297
Classification	Bureau Veritas I  Hull • Mach Yacht-Motor-S Unrestricted MCA LY3 Malta CYC

CONSTRUCTION

Hull	High resistance steel
Superstructure	Aluminium alloy
Deck	Teak
Interior Designer	Marcelo Penna Yacht Design
Ext. Designer	Acubens Naval Architect
Naval Architect	Acubens Naval Architect
Helipad	Helicopter MD 500E, Ronbison 44 or similar (compliance with MCA)

DIMENSIONS

Length overall	59.0 metres	193'7" Feet
Length waterline	51.4 metres	168'16" Feet
Beam	10.7 metres	35'1" Feet
Max. load draught	3.094 metres	10'15" Feet
Max. load displacement	920 Tn approx.	
Fuel Tanks	130,000 Litres	34,342 US Gallons
Water Tanks	20,000 Litres	5,548 US Gallons
Range at 12 knots speed	6.500 nautical miles	
Range at 9 knots speed	9.500 nautical miles	
Tonage	1043 GT	

COMMERCIAL SPECIFICATION METALSHIPS 59

ACCOMMODATION

Twin Cabins	2
King Cabins	1
Double Cabins	3
Total Guest Berths	12
Number of crew cabins	13
Total Crew Berths	16

GENERAL INFORMATION

Total Guest Surface area	1140 m ²
Of which:	
Interior areas:	640 m ²
External areas:	490 m ²

GENERAL ACCOMMODATION DESCRIPTION

Owner	Main Deck: Owners suite with two separate bathrooms and dressing room.
Guest	Lower Deck: Two double cabins and two twin cabins, all with ensuite bathrooms. Wheelhouse Deck: One VIP cabin with ensuite bathroom.
Crew	Captain's double cabin Up to 15 crew in 12 cabins

MACHINERY

Main Engines	2 Caterpillar 3516B serie II 2000 kW/1600 rpm
Propulsion Power	2000 kW (2,682 HP)
Fuel Type	Diesel
Gear Box	Reintjes WVS 930/1
Maximum Speed	16.5 kn
Cruising Speed	14 kn

COMMERCIAL SPECIFICATION METALSHIPS 59

AUXILLIARY MACHINERY

Stabilizers	Naiad 575 underway system
Water Makers	2 x Aquamar AQE-15D 500 lt/hour each
Air Conditioning/heating	Marine Air
Bow Thruster	ABT:TRAC. Power:110 kW
Stern Thruster	Hydraulic system pre-instalation for a 90 kW stern thruster
Fuel Filtration	2 x Alfa Laval centrifugal fuel separators, 900 lt/hour each
Sewage System	Mariner Ompipure M6025V
Propellers	2 x fixed screw propellers Cast Copper Alloys CU-3

ELECTRICAL SYSTEMS

Shore Power	One 400 V connection is provided in the aft portside together with an access facility through the hulland storage device.
Batteries	Battery chargers are VICTRON and FURUNO.
Generators	2 x Caterpillar C-9 175kW@1500 rpm 400 V AC3 phase 50 Hz
Emergency Generator	1 x Caterpillar C4.4 86 kW@1500 rpm 400 V AC3 phase 50 Hz

SAFETY & SECURITY

Safety	Throw-over SOLAS liferafts Class A on wheelhouse deck (4 x 20 people) Lifejackets for 28 people Rescue boat NEUVISA RR40 SOLAS White Searchlight COLORLIGHT CLIR-25 with thermal camera
Fire Fighting	The fire fighting system includes the following fixes and portable systems in compliance with IMO, BV and MCA requirements. <ul style="list-style-type: none">- Sea water fire-fighting system- Ultra-fog Sprinkler system- FM-200 for engine room- Fire extinguishers- Smoke detectors- Helideck foam system
Alarms	VIGOTRONICA Alarm Monitoring & Control System PHOENIX V.2 fire alarm system. Fully addressable system. Engine Room, all functional, technical, and accommodations area, will be monitored by smoke/heat sensors, connected to an alarm control panel located in the wheelhouse. General emergency alarm.

COMMERCIAL SPECIFICATION METALSHIPS 59

Security

CCTV: A surveillance system by TV closed system with monitors on Wheelhouse, bodyguard cabin and crew's lounge are arranged. Cameras are arranged as follows; Three on main deck aft, one on top of the Mast, one in engine control room, two in engine room and one in auxiliary equipment room. Safe in owner's cabin, VIP's cabin, guest's cabins, bodyguard's cabin and captain's cabin.

COMMUNICATION EQUIPMENT

1 x NAVTEX	SAILOR 6390/1
1 x Fleet Broadband	SAILOR FBB500
1 x VHF	SIMRAD RS90
1 x Airband VHF	ICOM AC-210
1 x Batteryless telephone	VIGTOR VSP-211-L
2 x VSAT Satellite Telephone	KNSZ100 MKII
IP Telephone system	
Wireless Data Network (WIFI)	
TV antenna	NAVYSYSTEM Mod. MST 65
	NAVYSYSTEM Mod. MST 95
Satellite TV System	
Terrestrial TV System	
Battery charger and alarm panel	
GMDSS:	
1 x VHF	SAILOR RT6222
3 x Portable VHF	ENDEL HT649
1 x SSB Telephone MF/HF	SAILOR 6310
1 x EPIRB	SIMRAD EG70 Auto
1 x INMARSAT MINI-C	SAILOR 6110 (with LRIT function)
2 x Radar transporter	SIMRAD SA70

NAVIGATION

1 x Single Gyro system with accesories	SIMRAD GC 80 Compact
Electromagnetic log system	WALKER 7070 MKII
Echosounder and speed log	H5000 GRAPHIC

COMMERCIAL SPECIFICATION METALSHIPS 59

1 x Staellite compass	SIMRAD GN70
1 x Magnetic compass	CASSEN PLATH mod. BETA 4
1 x Ultrasonic wind station	SIMRAD WI80
1 x Analogic wind station	B&G 508
2 x Autopilot	SIMRAD AP 70 + AC80 + RF14XU
AIS Class A	
1 x GPS Navigaton	SIMRAD MX610
2 x Plotter	SIMRAD NSS16 EVO2
2 x Radar	SIMRAD HALO-6
Engine controls and instruments	ZF Cruise command 4200
Bow thruster control	PARKER
Rudder angle indicator	SIMRAD R180-90
	SIMRAD RF14XU
Tank level gauge	
Steering system	
Fire fighting alarm central	MARINELEC PHOENIX V2
Window wiper	SPEICH
	SAILOR 6281

DECK EQUIPMENT

Deck Equipment and pasareles

1 x Electro hydraulic garage side door SANGUINETI
 2 x stainless steel vertical windlasses Model SV 24-1 / MR-24
 Speed (11/22 m/min) CARRAL
 2 x Stainless steel capstans Model CAPRI
 Capacity 1.5 T. Speed 16.5 m/min CARRAL
 Swimming ladder on the swimming platform
 1 x Electro hydraulic and telescopic stern pasarelle in stainless steel
 SANGUINETI
 1 x Accomodation ladder NUÑEZ VIGO
 1 x Side boarding ladder in aluminium BESENZONI

Ground Tackle

2 x Anchors approx 430 kg type HHP made in galvanized steel
 1 x 165 m. 22 mm Q2 grade galvanised steel chain cables
 1 x 137.5 m. 22 mm Q2 grade galvanised steel chain cables

COMMERCIAL SPECIFICATION METALSHIPS 59

Cranes/Davits/Passerelles

- 1 x Electro hydraulic tender travelift SANGUINETI
- 1 x Electro hydraulic telescopic davit in portside SANGUINETI
- 1 x Electro hydraulic telescopic crane in starboard SANGUINETI

Others

8 x Underwater lights, Class approved stainless steel 24 V, and special silicon cable, will be installed in the hull adjacent to the transom, to the light the aft underwater areas of the vessel.

DOMESTIC EQUIPMENT

Main galley and Pantry

- 1 x Door domestic refrigerator without freezer Liebherr
- 2 x Refrigerator side by side Liebherr
- 2 x Induction hob Gaggenau
- 2 x Deep fryers Gaggenau
- 1 x Teppan yaki Gaggenau
- 1 x Grill Gaggenau
- 1 x Pyrolytic oven Gaggenau
- 1 x Steam combined oven Gaggenau
- 1 x Microwave Gaggenau
- 3 x Chafing dish Gaggenau
- 2 x Dishwashers Jami
- 1 x Glasswasher Jemi
- 1 x Integrable coffee machine Gaggenau
- 1 x Rubbish compacting machine In Sink Erator
- 1 x Refrigerating cellar for wine Liebherr
- 2 x Stainless steel hoods Guttman
- 1 x Ice maker Scotsman
- 1 x Food elevator from Bottom Deck to the Wheelhouse Deck

Laundry

- 3 x Washing machines Bosch
- 3 x Condensation drying machines Bosch
- 1 x Industrial ironing machine

Pantry on Wheelhouse deck

- 1 x Refrigerator side by side Liebherr
- 1 x Microwave oven with grill Gaggenau
- 2 x Chafing dish Gaggenau
- 1 x Integrable coffee machine Gaggenau
- 1 x Ice-maker Scotsman
- 1 x Dishwasher Jemi

Lounge Bar on main deck

- 1 x Ice-maker Scotsman
- 1 x Cabinet for wine Liebherr

COMMERCIAL SPECIFICATION METALSHIPS 59

Aft bathing area	1x Ice-maker Scotsman 1 x Cabinet for wine Liebherr
Aft bar on Wheelhouse Deck	1x Ice-maker Scotsman 1 x Cabinet for wine Liebherr
Fly deck and bar counters	1 x Refrigerator side by side Liebherr 1x Ice-maker Scotsman 1 x Cabinet for wine Liebherr

AUDIO VISUAL

Flybridge Deck

Gym:

40" Full HD Smart TV
Denon AV Receiver 42
Revel 263 In-Ceiling Speaker
Control4 Room Controller 3
Control4 System Remote Base
Leaf Matrix Breakout
UBNT 5 Port Switch

Jacuzzi:

Revel C383 Outdoor Speaker

Deck:

Bose 8 Channel Power Amp
Bose IP Rated Subwoofer
Bose Full Range IP Rated Box Speaker
Bose IP Rated Column Speaker
Apple iPad Mini + Launchport Wall

Wheelhouse Deck

Cinema:

75" 4K Smart TV
Digital Surround Sound Processor 42
Revel 283 In-Ceiling Speaker
Velodyne 800 Subwoofer
Control4 Control Processor 3
Control4 System Remote Base
Leaf Matrix Breakout
Pioneer Bluray DVD Player MR
UBNT 5 Port Switch

Captain:

32" Full HD Smart TV
Denon AV Receiver 1200

COMMERCIAL SPECIFICATION METALSHIPS 59

Revel 263 In-Ceiling Speaker
Control4 Room Controller 1
Control4 System Remote
Leaf Matrix Breakout
UBNT 5 Port Switch

VIP:

49" 4K Smart TV
Denon AV Receiver 1200
Revel 283 In-Ceiling Speaker
Control4 Room Controller 3
Control4 System Remote Base
Leaf Matrix Breakout
UBNT 5 Port Switch

Sky Lounge:

65" 4K Smart TV
Denon AV Receiver 32
Revel 283 In-Ceiling Speaker
Velodyne 800 Subwoofer
Control4 Room Controller 3
Control4 System Remote
Leaf Matrix Breakout
UBNT 8 Port Switch

WHD Aft:

Control4 Zone Amp
Revel C383 Outdoor Speaker
Apple iPad Mini + Launchport

Main deck

Master Room:

65" 4K Smart TV
F.A Vertical In-Wall TV Mechanism
Denon AV Receiver 42
Revel 283 In-Ceiling Speaker
Velodyne 800 Subwoofer
Control4 Control Processor 3
Control4 System Remote
Leaf Matrix Breakout
UBNT 5 Port Switch
Control4 4 Zone Power Amplifier

Master Bath:

Linn In-Ceiling Spot Speaker Pair

Master Office:

Revel 263 In-Ceiling Speaker
Apple iPad Mini + Launchport

Main Salon:

65" 4K Smart TV
Denon AV Receiver 42
Revel 283 In-Ceiling Speaker

COMMERCIAL SPECIFICATION METALSHIPS 59

Velodyne 800 Subwoofer
Control4 Room Controller 3
Control4 System Remote Base
Leaf Matrix Breakout
UBNT 5 Port Switch
Control4 4 Zone Power Amplifier

Dining Room:

Revel 263 In-Ceiling Speaker
Apple iPad Mini + Launchport Desk

MD Aft :

Revel C383 Outdoor Speaker
Apple iPad Mini + Launchport Desk

Galley:

Bose Sound Touch 10

Lower Deck

Guests:

40" Full HD Smart TV
Denon AV Receiver 1200
Revel 263 In-Ceiling Speaker
Control4 Room Controller 1
Control4 System Remote
Leaf Matrix Breakout
UBNT 5 Port Switch

Crew Lounge:

40" Full HD Smart TV
Denon AV Receiver 1200
Revel 263 In-Ceiling Speaker
Control4 Room Controller 1
Control4 System Remote
Leaf Matrix Breakout
UBNT 5 Port Switch

Chief Engineer:

32" Full HD Smart TV
Denon AV Receiver 1200
Revel 263 In-Ceiling Speaker
Control4 Room Controller 1
Control4 System Remote
Leaf Matrix Breakout
UBNT 5 Port Switch

Laundry:

Bose Sound Touch 10

COMMERCIAL SPECIFICATION METALSHIPS 59

Bottom deck

Bodyguard:

32" Full HD Smart TV
Denon AV Receiver 1200
Revel 263 In-Ceiling Speaker
Control4 Room Controller 1
Control4 System Remote
Leaf Matrix Breakout
UBNT 5 Port Switch

Beach:

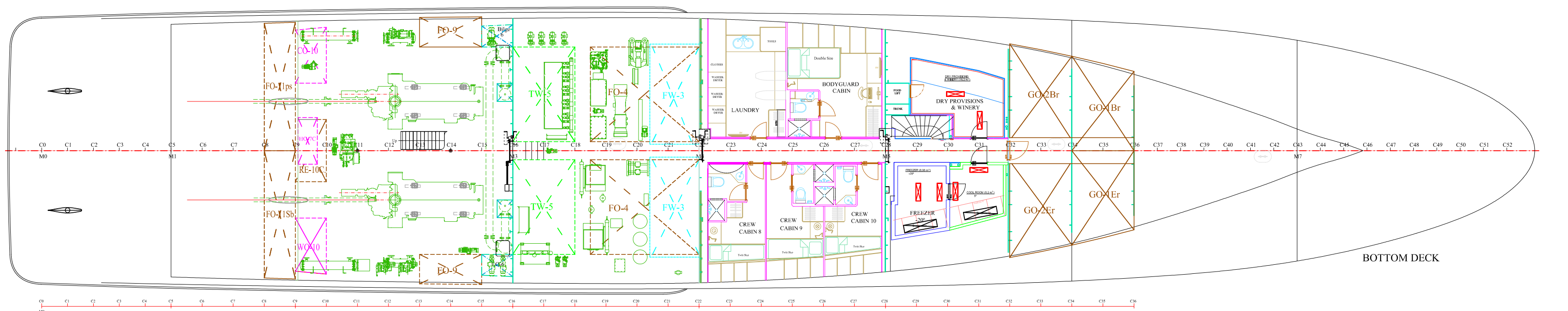
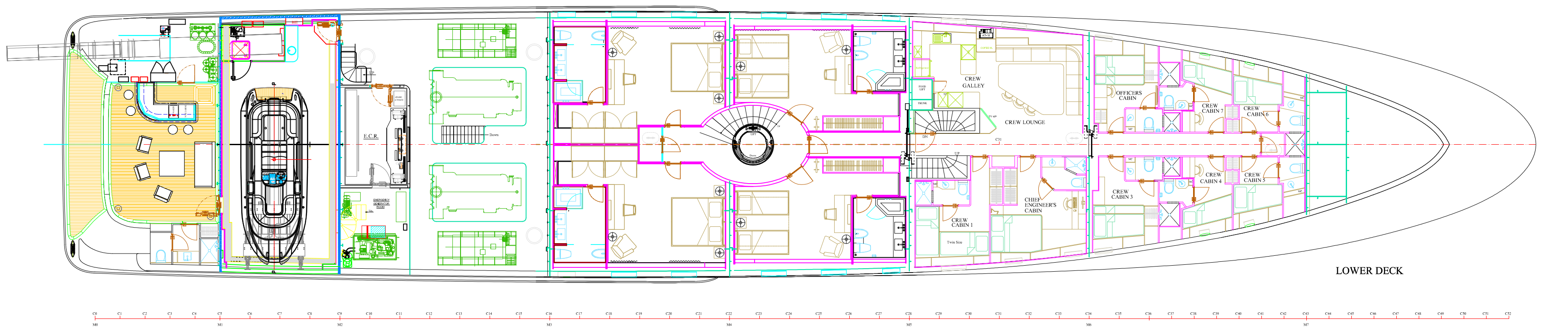
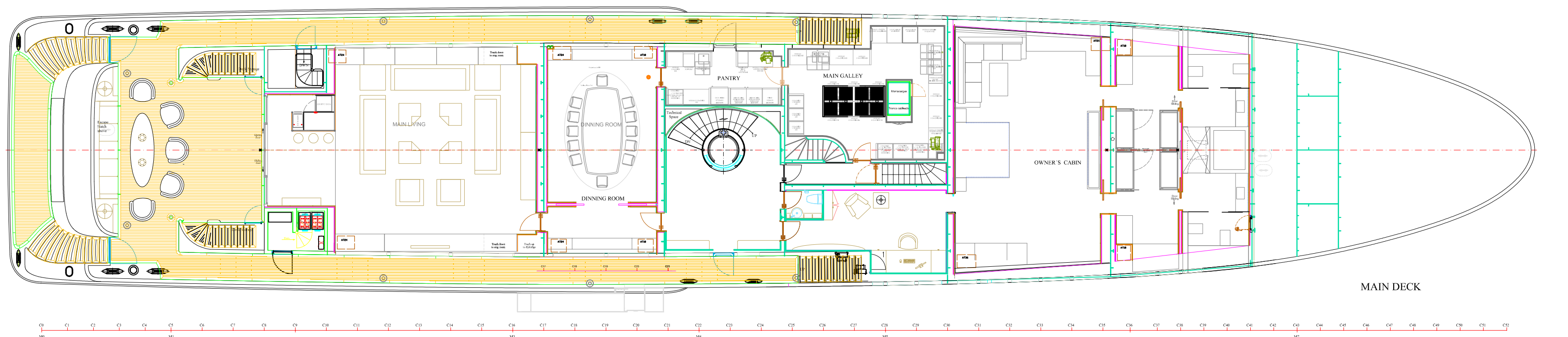
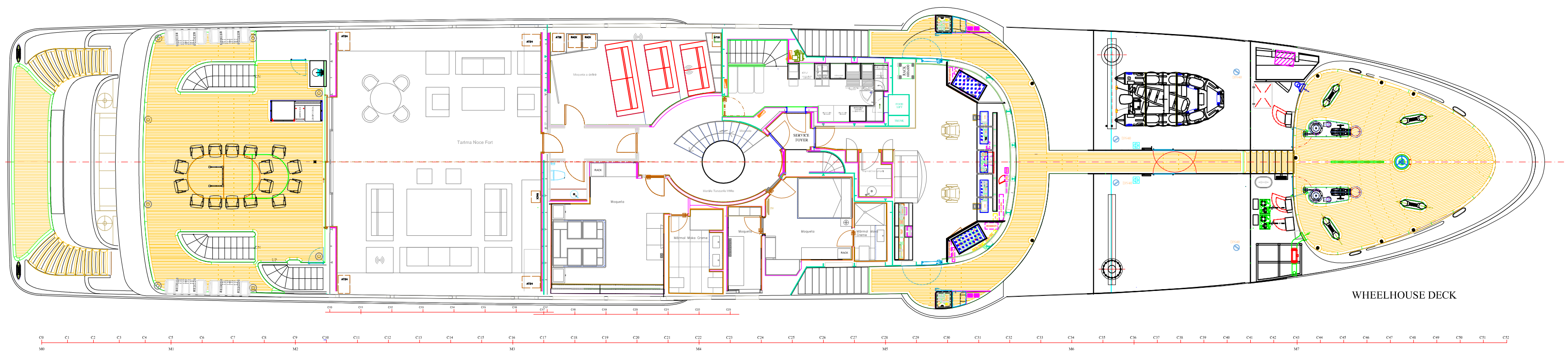
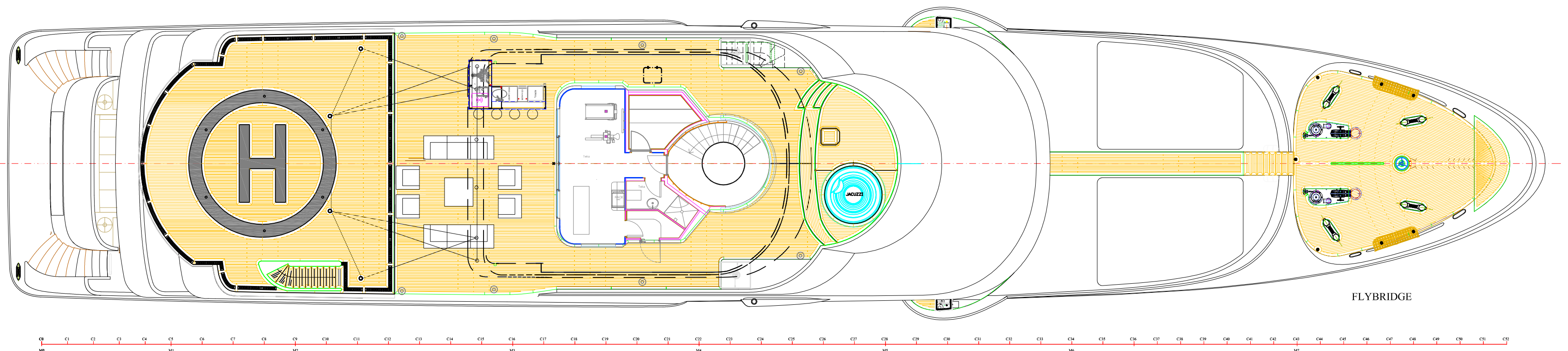
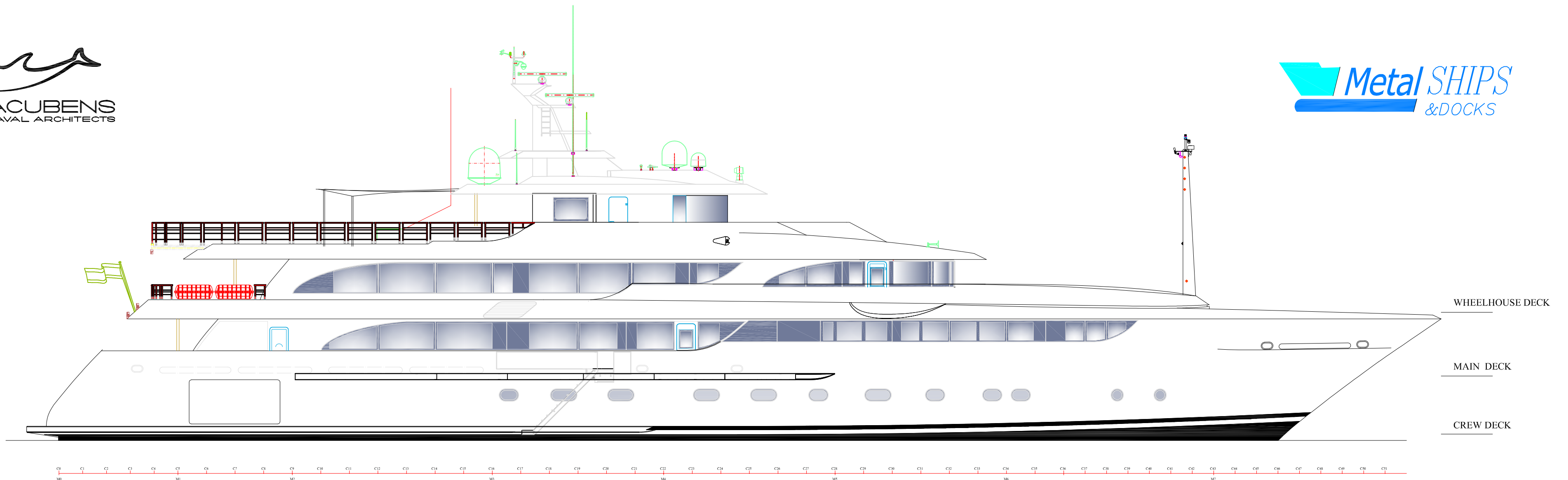
Bose Sound Touch 10

TENDERS & SPORT EQUIPMENT

Tenders	1 x Castoldi Jet 23 OPTIONAL
Rescue boat	1 x RR40 Neuvisa

LEISURE & FITNESS

Jacuzzi
Massage Room
Gym Equipment
Sauna



CARACTERISTICAS / MAIN PARTICULARS

Eslora / lenght	59.00 M	Velocidad max. / max. speed	16.5 kn
Manga / Beam	10.70 M	Velocidad crucero / cruise speed	14 kn
Calado medio / medium Draft	3.094 M	Autonomia a 12 N / 12knts Range	6500 nm
despl. media carga / displ. medium load	770 Tm	Fuel capacidad / Fuel capacity	134.240 l
MM.PP / Main Engines	2x 2000kw 1600 r.p.m	Capacidad agua dulce / FW capacity	21.940 l
MM.EM / Emergency Eng.	2x175kw + 1x 86kw	Acomodación / Accommodation	12 pas
			16 crew

COTA DE CLASE / CLASS NOTATION: Bureau Veritas I X HULL* MACH YACHT-MOTORS-S UNRESTRICTED MCA LY3