



# Boat Profile: " CUSTOM LINE NAVETTA 26"

## Electronics & Navigation

GENERATOR	Kohler 27KW + Kohler 27KW -1600 hours
AUTOPILOT	SIMRAD
BOW THRUSTER	ABT TRAC 40 Hp hydraulic
STERN THRUSTER	ABT TRAC 40 Hp hydraulic
RADAR	Furuno Navnet with antenna Furuno DRS6A
COMPASS	Ritchie
TVCC	Masters AVS4-8 on Masters 15"
VHF	2 SIMRAD RS82
DEPTH FINDER	Furuno DFF1
GPS / PLOTTER	Furuno Navnet with Furuno
TRIM TABS	Yes
ELECTRICITY	24/220/380 V
BATTERIES	10x180Ah Services / 4x180Ah Engines 2x180Ah Generators / 2x150Ah Emergency
BATTERY CHARGER	2xMastervolt 75A/Mastervolt 15A/Mastervolt 6A
WINDLASS	2xLofrans 3500W / 2xLofrans 1500W
WI-FI INTERNET ACCESS	Yes
HOLDING TANK	330 l grey- 330 l black
WATERMAKER	Idromar 260 l/h
STABILIZERS	2 x ARG Mitsubishi MSM 4000+ABT TRAC 250/9.0
COMMUNICATIONS:	Multimedia SONOS + iPod Docking Station

## Domestic Equipment

AIR CONDITIONED	Condaria 144.000 BTU/h
FRIDGE	General Eletric
ICEMAKER	Yes
OVEN / MICROWAVE	Siemens
COOKER	5 x Bosch
FREEZER	Bosch
DRYER	Siemens
WASHING MACHINE	Siemens
DISHWASHER	Bosch

## Entertainment & Aux. Equipment

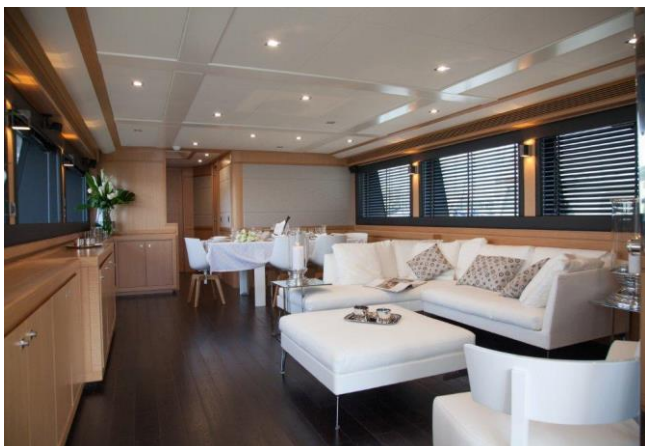
STEREO	Bose Sound System
CD PLAYER	Bose Sound System
TELEVISION	46",2x32",26",21",19",18" LCD TV
ANTENNA SAT	Navisystem NT95
DINGHY	WILLIAMS 445 TURBOJET 6 PEOPLE
JET SKI	SEADOO RXP 255
DAVITS	Crane Besenzoni 800 kg

## Extra Equipment

## Boat Profile: " CUSTOM LINE NAVETTA 26"

- High pressure water (3 external connections)
  - Gi8 system
  - Generator Kohler 28 KW (diff. std. 20KW)
  - Stern thruster 40Hp HYDRAULIC
  - Craine 800kg (diff.std.600kg)
  - Control station in cockpit
  - Water maker Idromar 260l/h (diff.std.130l/h)  
Water softener( COLD WATER+ SPARKLING WATER) + Carbon Filter fresh water
  - Underwater lights Xenon
  - Furuno Navnet Radar
  - Dimmer lights ON GI8
  - Tv LCD/LED 46" in saloon with eletric lift
  - Tv LCD 32" in master cabin, VIP cabins
  - Tv LCD 20" in galley
  - I-pod docking station
  - Multimedia SONOS SOUND
  - Bose Virtual Surround 3.2.1 GSX
  - Wine refrigerator
  - Additional Freezer 74l in galley
  - Antenna SAT NAVISYSTEM NT95
  - 2 x chains 150 mt ( diff. std. 100 /75 mt)
  - Cockpit cover
  - Bimini top
  - Tender WILLIAMS 445 TURBOJET 6 PEOPLE 33h
  - EPIRB ACR GLOBALFLIX 406 Cat.1
  - 2 VHF SIMRAD RS82 with DISTRESS
  - 2 x Anchors POOL 85 kg
- Approval MCA

### **PHOTO GALLERY**



Saloon



Saloon

# Boat Profile: " CUSTOM LINE NAVETTA 26"



Galley



Cockpit



Master cabin



Master Bathroom



Pilot House



Pilot House

# Boat Profile: " CUSTOM LINE NAVETTA 26"



Upper deck



Upper deck



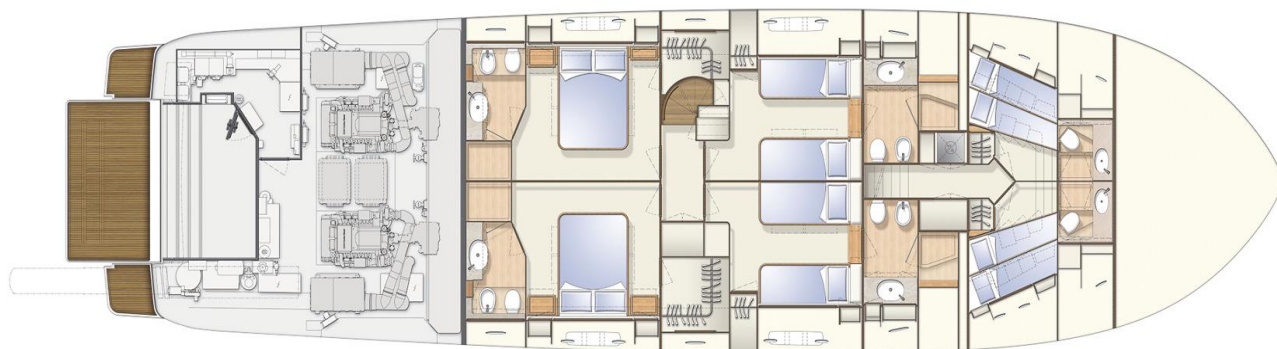
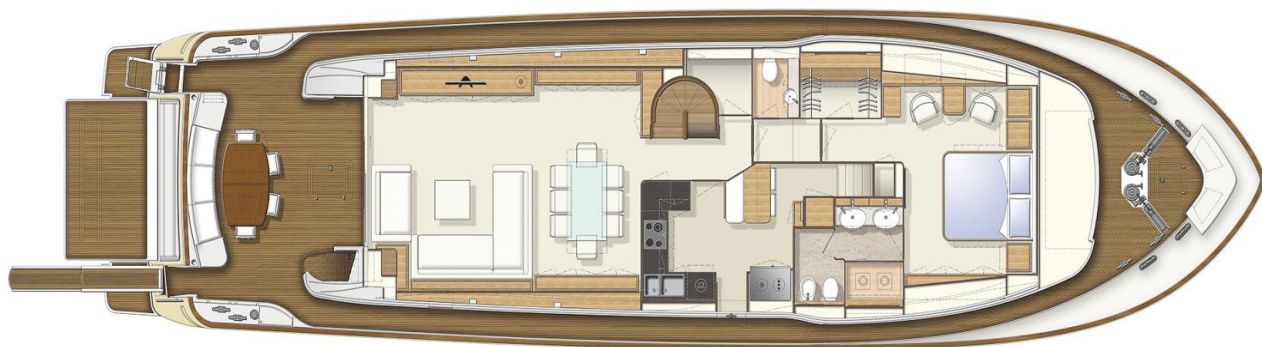
VIP cabin



Guest cabin



# Boat Profile: " CUSTOM LINE NAVETTA 26"



LAYOUT