

# MAYBE



## 2016 MetalSHIPS & Docks

<b>LOA:</b>	59.00m (193' 7")	<b>Delivery/Model Year:</b>	2016
<b>Beam:</b>	10.70m (35' 2")	<b>Builder:</b>	MetalSHIPS & Docks
<b>Max Draft:</b>	3.20m (10' 6")	<b>Type:</b>	Displacement Motor Yacht
<b>Speed:</b>	Cruising 14 Knots (16 MPH) Max 17 Knots (20 MPH)	<b>Price:</b>	29,000,000 EUR
		<b>Location:</b>	Vigo, Spain

### Additional Specifications For MAYBE:

<b>LOA:</b>	59.00m (193' 7")	<b>Delivery/Model</b>	2016
<b>Beam:</b>	10.70m (35' 2")	<b>Year:</b>	
<b>Max Draft:</b>	3.20m (10' 6")	<b>Year Built:</b>	2016
<b>Hull Material:</b>	Steel	<b>Builder:</b>	MetalSHIPS & Docks
<b>Hull Config:</b>	Displacement w/ Bulbous Bow	<b>Type:</b>	Displacement Motor Yacht
<b>Hull Designer:</b>	Inigo Echenique	<b>Top:</b>	Enclosed P.H. W/Sundeck
<b>Deck Material:</b>	Teak	<b>Engines:</b>	2682 HP,Twin, 2016, Inboard, Diesel, CAT, 3516B Series II, 844hrs / 835hrs
<b>Tonnage:</b>	1,043	<b>Staterooms:</b>	6
<b>Range At Cruise</b>	6000	<b>Sleeps:</b>	12
<b>Speed:</b>		<b>Crew Quarters:</b>	13
<b>Speed:</b>	Cruising 14 Knots (16 MPH) Max 17 Knots (20 MPH)	<b>Crew Berths:</b>	16
<b>Int Designer:</b>	Marcelo Penna Yacht Design	<b>Captain Cabin:</b>	Yes
<b>Ext Designer:</b>	Acubens Naval Architects	<b>Classifications:</b>	Bureau Veritas LY3
<b>Fuel Capacity:</b>	34,342.37 Gal (130,000.00 L)	<b>MCA:</b>	No
<b>Water Capacity:</b>	5,283.44 Gal (20,000.00 L)	<b>ISM:</b>	Yes
<b>Holding Tank:</b>	1,717.12 Gal (6,500.00 L)		
<b>Flag:</b>	Spain		
<b>Location:</b>	Vigo, Spain		
<b>Price:</b>	29,000,000 EUR		
<b>Tax Status:</b>	VAT Unpaid		

### **Boat Highlights**

- Extremely large Full Beam Master Cabin with his and hers walk in wardrobes and bathroom
- Large Main Salon with Private Dining Room forward which could double as a boardroom for business meetings
- Generous Sky Lounge
- Large Private Cinema forward of the Sky Lounge
- Glass elevator from the lower deck all the way up to the sun deck. Each deck has its own adjacent lobby and a circular staircase making a beautiful central feature
- Dedicated cabin for private security with full CCTV access and control
- Abundant cold and dry storage for extended cruising or chartering
- Aft beach club/entertainment area adjacent to the swim platform
- Main engines and generators all under 1000 hours of running time
- Helideck

### **Navigational Equipment**

- 1 x Single Gyro system with accesories SIMRAD GC 80 Compact
- Electromagnetic log system WALKER 7070 MKII
- Echosounder and speed log H5000 GRAPHIC
- 1 x Satellite compass SIMRAD GN70
- 1 x Magnetic compass CASSEN PLATH mod. BETA 4
- 1 x Ultrasonic wind station SIMRAD WI80
- 1 x Analogic wind station B&G 508
- 2 x Autopilot SIMRAD AP 70 + AC80 + RF14XU
- AIS Class A
- 1 x GPS Navigaton SIMRAD MX610
- 2 x Plotter SIMRAD NSS16 EVO2
- 2 x Radar SIMRAD HALO-6
- Engine controls and instruments ZF Cruise command 4200
- Bow thruster control PARKER
- Rudder angle indicator SIMRAD R180-90SIMRAD RF14XU
- Tank level gauge
- Steering system
- Fire-fighting alarm central MARINELEC PHOENIX V2
- Window wiper SPEICH , SAILOR 6281

## **Communications Equipment**

- 1 x NAVTEX SAILOR 6390/1
- 1 x Fleet Broadband SAILOR FBB500
- 1 x VHF SIMRAD RS90
- 1 x Airband VHF ICOM AC-210
- 1 x Batteryless telephone VIGNTOR VSP-211-L
- 2 x VSAT Satellite Telephone KNSZ100 MKII

IP Telephone system

- Wireless Data Network (WIFI)
- TV antenna      NAVYSYSTEM Mod. MST 65

NAVYSYSTEM Mod. MST 95

- Satellite TV System
- Terrestrial TV System
- Battery charger and alarm panel

GMDSS:

- 1 x VHF SAILOR RT6222
- 3 x Portable VHF ENTEL HT649
- 1 x SSB Telephone MF/HF SAILOR 6310
- 1 x EPIRB SIMRAD EG70 Auto
- 1 x INMARSAT MINI-C SAILOR 6110 (with LRIT function)
- 2 x Radar transporter SIMRAD SA70

## **Deck Equipment**

### **DECK EQUIPMENT AND PASARELLES**

- 1 x Electro hydraulic garage side door SANGUINETI
- 2 x stainless steel vertical windlasses Model SV 24-1 / MR-24 [ Speed (11/22 m/min) CARRAL ]
- 2 x Stainless steel capstans Model CAPRI [ Capacity 1.5 T. Speed 16.5 m/min CARRAL ]
- Swimming ladder on the swimming platform
- 1 x Electro hydraulic and telescopic stern pasarelle in stainless steel SANGUINETI
- 1 x Accommodation ladder NUÑEZ VIGO
- 1 x Side boarding ladder in aluminum BESENZONI

### **GROUND TACKLE**

- 2 x Anchors approx 430 kg type HHP made in galvanized steel
- 1 x 165 m. 22 mm Q2 grade galvanised steel chain cables
- 1 x 137.5 m. 22 mm Q2 grade galvanised steel chain cables

### **CRANES/DAVITS/PASARELLES**

- 1 x Electro hydraulic tender travelift SANGUINETI
- 1 x Electro hydraulic telescopic davit in portside SANGUINETI
- 1 x Electro hydraulic telescopic crane in starboard SANGUINETI

### **OTHER**

8 x Underwater lights, Class approved stainless steel 24 V, and special silicon cable, will be installed in the hull adjacent to the transom, to the light the aft underwater areas of the vessel.

## **Safety & Fire Protection**

### **SAFETY**

- Throw-over SOLAS liferafts Class A on wheelhouse deck (4 x 20 people)
- Lifejackets for 28 people
- Rescue boat NEUVISA RR40 SOLAS White
- Searchlight COLORLIGHT CLIR-25 with thermal camera

### **FIRE FIGHTING**

The fire fighting system includes the following fixes and portable systems in compliance with IMO, BV and MCA requirements.

- Sea water fire-fighting system
- Ultra-fog Sprinkler system
- FM-200 for engine room
- Fire extinguishers
- Smoke detectors
- Helideck foam system

### **ALARMS**

- VIGOTRONICA Alarm Monitoring & Control System
- PHOENIX V.2 fire alarm system. Fully addressable system.
- Engine Room, all functional, technical, and accommodations area, will be monitored by smoke/heat sensors, connected to an alarm control panel located in the wheelhouse.
- General emergency alarm.

### **SECURITY**

- CCTV: A surveillance system by TV closed system with monitors on Wheelhouse, bodyguard cabin and crew's lounge are arranged.
- Cameras are arranged as follows; Three on main deck aft, one on top of the Mast, one in engine control room, two in engine room and one in auxiliary equipment room.
- Safe in owner's cabin, VIP's cabin, guest's cabins, bodyguard's cabin and captain's cabin.

## **Electrical Equipment**

### **SHORE POWER**

One 400 V connection is provided in the aft portside together with an access facility through the hull and storage device.

### **BATTERIES**

Battery chargers are VICTRON and FURUNO

### **GENERATORS**

2 x Caterpillar C-9 175kW@1500 rpm 400 V AC3 phase 50 Hz

### **EMERGENCY GENERATOR**

1 x Caterpillar C4.4 86 kW@1500 rpm 400 V AC3 phase 50 Hz

## **Domestic Equipment**

### **MAIN GALLEY AND PANTRY**

- 1 x Door domestic refrigerator without freezer Liebherr
- 2 x Refrigerator side by side Liebherr
- 2 x Induction hob Gaggenau
- 2 x Deep fryers Gaggenau
- 1 x Teppan yaki Gaggenau
- 1 x Grill Gaggenau
- 1 x Pyrolytic oven Gaggenau
- 1 x Steam combined oven Gaggenau
- 1 x Microwave Gaggenau
- 3 x Chafing dish Gaggenau
- 2 x Dishwashers Jami
- 1 x Glasswasher Jemi
- 1 x Integrable coffee machine Gaggenau
- 1 x Rubbish compacting machine In Sink Erator
- 1 x Refrigerating cellar for wine Liebherr
- 2 x Stainless steel hoods Guttman
- 1 x Ice maker Scotsman
- 1 x Food elevator from Bottom Deck to the Wheelhouse Deck

#### **LAUNDRY**

- 3 x Washing machines Bosch
- 3 x Condensation drying machines Bosch
- 1 x Industrial ironing machine

#### **PANTRY ON WHEELHOUSE DECK**

- 1 x Refrigerator side by side Liebherr
- 1 x Microwave oven with grill Gaggenau
- 2 x Chafing dish Gaggenau
- 1 x Integrable coffee machine Gaggenau
- 1 x Ice-maker Scotsman
- 1 x Dishwasher Jemi

#### **LOUNGE BAR ON MAIN DECK**

- 1 x Ice-maker Scotsman
- 1 x Cabinet for wine Liebherr

#### **AFT BATHING AREA**

- 1x Ice-maker Scotsman
- 1 x Cabinet for wine Liebherr

#### **AFT BAR ON WHEELHOUSE DECK**

- 1x Ice-maker Scotsman
- 1 x Cabinet for wine Liebherr

#### **FLY DECK AND BAR COUNTERS**

- 1 x Refrigerator side by side Liebherr
- 1x Ice-maker Scotsman
- 1 x Cabinet for wine Liebherr

#### **Audio & Visual Equipment**

## **FLYBRIDGE DECK**

### GYM

- 40" Full HD Smart TV
- Denon AV Receiver 42
- Revel 263 In-Ceiling Speaker
- Control4 Room Controller 3
- Control4 System Remote Base
- Leaf Matrix Breakout
- UBNT 5 Port Switch

### JACUZZI

- Revel C383 Outdoor Speaker

### DECK

- Bose 8 Channel Power Amp
- Bose IP Rated Subwoofer
- Bose Full Range IP Rated Box Speaker
- Bose IP Rated Column Speaker
- Apple iPad Mini + Launchport Wall

### WHEELHOUSE DECK

#### **Cinema**

- 75" 4K Smart TV
- Digital Surround Sound Processor 42
- Revel 283 In-Ceiling Speaker
- Velodyne 800 Subwoofer
- Control4 Control Processor 3
- Control4 System Remote Base
- Leaf Matrix Breakout
- Pioneer Bluray DVD Player MR

#### **Captain**

- 32" Full HD Smart TV
- Denon AV Receiver 1200
- Revel 263 In-Ceiling Speaker
- Control4 Room Controller 1
- Control4 System Remote
- Leaf Matrix Breakout
- UBNT 5 Port Switch

#### **VIP**

- 49" 4K Smart TV
- Denon AV Receiver 1200
- Revel 283 In-Ceiling Speaker
- Control4 Room Controller 3
- Control4 System Remote Base
- Leaf Matrix Breakout
- UBNT 5 Port Switch

#### **Sky Lounge**

- 65" 4K Smart TV
- Denon AV Receiver 32
- Revel 283 In-Ceiling Speaker
- Velodyne 800 Subwoofer
- Control4 Room Controller 3
- Control4 System Remote
- Leaf Matrix Breakout
- UBNT 8 Port Switch

#### **WHD aft**

- Control4 Zone Amp
- Revel C383 Outdoor Speaker
- Apple iPad Mini + Launchport

#### **MAIN DECK**

##### MASTER ROOM

- 65" 4K Smart TV
- F.A Vertical In-Wall TV Mechanism
- Denon AV Receiver 42
- Revel 283 In-Ceiling Speaker
- Velodyne 800 Subwoofer
- Control4 Control Processor 3
- Control4 System Remote
- Leaf Matrix Breakout
- UBNT 5 Port Switch
- Control4 4 Zone Power Amplifier

##### MASTER BATH

- Linn In-Ceiling Spot Speaker Pair

##### MASTER OFFICE

- Revel 263 In-Ceiling Speaker
- Apple iPad Mini + Launchport

##### MAIN SALON

- 65" 4K Smart TV
- Denon AV Receiver 42
- Revel 283 In-Ceiling Speaker
- Velodyne 800 Subwoofer
- Control4 Room Controller 3
- Control4 System Remote Base
- Leaf Matrix Breakout
- UBNT 5 Port Switch
- Control4 4 Zone Power Amplifier

##### DINING ROOM

- Revel 263 In-Ceiling Speaker



- Apple iPad Mini + Launchport Desk

## **LOWER DECK**

### GUESTS

- 40" Full HD Smart TV
- Denon AV Receiver 1200
- Revel 263 In-Ceiling Speaker
- Control4 Room Controller 1
- Control4 System Remote
- Leaf Matrix Breakout
- UBNT 5 Port Switch

### CREW LOUNGE

- 40" Full HD Smart TV
- Denon AV Receiver 1200
- Revel 263 In-Ceiling Speaker
- Control4 Room Controller 1
- Control4 System Remote
- Leaf Matrix Breakout
- UBNT 5 Port Switch

### CHIEF ENGINEER:

- 32" Full HD Smart TV
- Denon AV Receiver 1200
- Revel 263 In-Ceiling Speaker
- Control4 Room Controller 1
- Control4 System Remote
- Leaf Matrix Breakout
- UBNT 5 Port Switch

### LAUNDRY

- Bose Sound Touch 10
- BOTTOM DECK

### BODYGUARD

- 32" Full HD Smart TV
- Denon AV Receiver 1200
- Revel 263 In-Ceiling Speaker
- Control4 Room Controller 1
- Control4 System Remote
- Leaf Matrix Breakout
- UBNT 5 Port Switch

### BEACH

- Bose Sound Touch 10

## **Disclaimer**

Details of this vessel are offered in good faith but we cannot guarantee or warrant the accuracy of this information nor warrant the

condition of the vessel. Buyer should instruct his agents, and/or his surveyors, to investigate such details as the buyer desires validated. This vessel is offered subject to prior sale, price change, or withdrawal without notice.

**MY Maybe - Aft port veiw**



**MY Maybe - Fwd port veiw**



**MY Maybe helm station**



**MY Maybe - Bar at entrance to main salon**



**MY Maybe - Main salon lounge**



**MY Maybe - Main salon looking forward**





**MY Maybe - Sky lounge stbd**



**MY Maybe - Sky lounge**



**MY Maybe - Sky lounge**



**MY Maybe - Sky lounge port**





**MY Maybe - Private dining room**



**MY Maybe - Private dining room**





**MY Maybe - Cinema**



**MY Maybe - Elevator lobby**



**MY Maybe - Elevator and main staircase**



**MY Maybe - galley**



**MY Maybe - galley**



**MY Maybe - Walk in wardrobe**





**MY Maybe - Walk in wardrobe**



**MY Maybe - Master cabin**



**MY Maybe - Master cabin**



**MY Maybe - Master cabin**



**MY Maybe - Master cabin lounge**



**MY Maybe - Master cabin office**





**MY Maybe - Master cabin office**



**MY Maybe - Master cabin**



**MY Maybe - Master cabin**



**MY Maybe - Master bathroom**





**MY Maybe - Master bathroom**



**MY Maybe - Master bathroom**



**MY Maybe - Master bathroom**



**MY Maybe - VIP double cabin**



**MY Maybe - VIP double cabin**



**MY Maybe - VIP cabin**





**MY Maybe - guest cabin**



**MY Maybe - guest cabin**



**MY Maybe - guest cabin**



**MY Maybe - guest cabin**



**MY Maybe - guest cabin**



**MY Maybe - guest cabin**





**MY Maybe - guest cabin**



**MY Maybe - guest cabin**



**MY Maybe - guest cabin**



**MY Maybe - Fitness**





**MY Maybe - Fitness**



**MY Maybe - Elevator to sun deck**



**MY Maybe - Sauna**



**MY Maybe - Sauna**





**MY Maybe - Sauna**



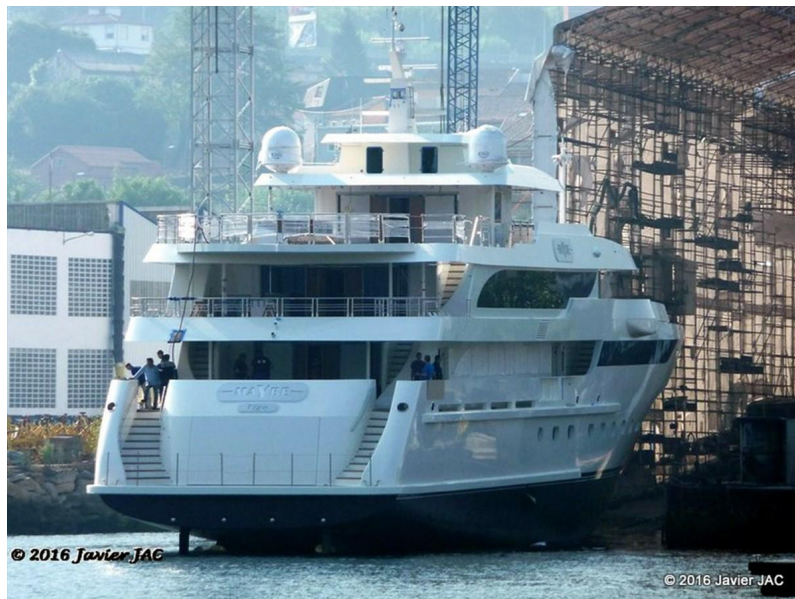
**MY Maybe - Beach Club**



**MY Maybe**



**MY Maybe**



**MY Maybe**

